

SUPERGROUT EG

TECHNICAL DATA SHEET

2025



AVAILABLE
IN MULTI COLORS



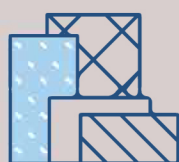
FCSC SUPERGROUT EG TILE JOINT GROUT IS A THREE-COMPONENT COLOR-FAST, STAIN AND CHEMICAL RESISTANCE, HARD WEARING AND IMPERVIOUS TILE JOINT EPOXY RESIN-BASED GROUT SPECIFICALLY DESIGNED FOR USE IN APPLICATION OF CERAMIC TILES, VITRIFIED TILES, SEMI-VITRIFIED TILE, GLASS MOSAIC TILES, METAL TILES, PRECAST TERRAZZO, ENGINEERED STONE FLOORS AND NATURAL STONE JOINTS WHERE A HYGIENIC AND STERILE CONDITION IS EXPECTED. IT IS WELL SUITED FOR INTERIOR AND COVERED EXTERIOR FLOOR AND WALL OF RESIDENTIAL AND COMMERCIAL APPLICATIONS. IT EFFECTIVELY FILLS THE GAPS AND LEVELS ITSELF TO GIVE A HARD-WEARING, DUST & WATER PROOF TILE JOINT.





FEATURES AND BENEFITS

1. High Stain, Germ and Chemical Resistance
2. Hygiene, Antibacterial and does not allow fungal growth
3. High Strength Non-Shrinkage Grout
4. Decorative and Glossy Finish
5. Water and Shock resistance
6. High quality stable color quartz
7. Extremely durable and completely waterproof



WORKS BEST ON

Designed for Interior and Covered exterior floor and wall joints of all types of tiles and stones

1. Residential
2. Commercial
3. Institutional and Commercial Kitchens
4. Cafeterias
5. Wet areas like swimming pools, sauna, water bodies and wash rooms

Note

- Do not use showers for at least 7 days after completion of grouting
- Do not fill the pool at least 10 days after completion of grouting



CERTIFICATION

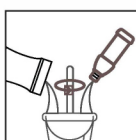
1. EN 13888/ISO 13007 – 3(RG)
2. ANSI 118.3



APPLICATION PROCEDURE

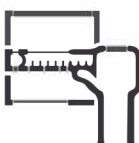
Surface Preparation: Before starting to grout, the adhesive bed must be set and joints should be free of residue. Remove the dirt and dust from grout joints by cleaning with the sponge provided. Do not clean the joints with acid, if in case of cleaning it with acid – wash it with plenty of water.

Start filling the joints with mixed material using a rubber float. FCSC SUPERGROUT EG can be applied with caulking gun also. Make sure that all joints are packed full. Remove as much material as possible by holding the rubber float perpendicular to the surface before initial cleaning of the grout. Every 15-20 minutes check the joints to be stiff. Do not leave excess grout on the face of the tile.



MIXING PROCEDURE

Mixing: The entire content of Part A and Part B should be emptied in to a cleaning mixing vessel/bucket. Mix both parts carefully with the help of a mechanical stirrer until a smooth mixture is obtained. Add at least 75% of Part C to the vessel and mix it to a uniform consistency. Add remaining filler to the vessel and mix it to achieve a stiff mix to work into the joints.



COVERAGE

Coverage depends on the tile size, joint width and depth



SURFACE CLEANING

Initial Cleaning: After 30-40 minutes of application, use a scrubber which is provided in the kit and clean water to scrub the tile and joints in a circular motion diagonally to the grout lines in both clockwise and anti-clockwise directions. Then take a clean wet towel and drag across the tile to remove any residue.

Final Cleaning: After 18-24 hours, do the second cleaning using water and normal soap detergent and repeat the wet towel process to remove the remaining haze if any.



PACKING AND COLOR

FCSC SUPERGROUT EG is a 3-component factory proportionated kit with Hardener (Part A), Resin (Part B) and Coloured filler powder (Part C). It's available in a variety of colors.



PRECAUTIONS

The precautions should be taken:

- It is recommended to use suitable protective clothing, gloves and eye/face protection while handling the material
- Keep out of reach of the children
- In case of contact with eyes, rinse eyes with plenty of water and consult a doctor immediately

For further and complete information about the safe use of our product please refer to the latest version of our material safety data sheet.



CLEANING

Tools and containers should be cleaned with plenty of water while the material is still fresh. Surfaces should be cleaned with a damp cloth, before the material dries.



SHELF LIFE

18 months from the date of manufacturing in the original unopened manufacturer's packaging. Store in clean dry place away from moisture



LIMITATIONS

- Not to be used on rubber surfaces
- Not recommended for highly absorbent tiles and stones which may allow the resin to penetrate (test small areas first)
- Not recommended to the joints which are subjected to extreme movements
- Not a replacement to waterproofing membranes
- Do not add excess than recommended
- Never add any material to the mix at site
- Not recommended exterior application, light shades may shade when exposed to sunlight
- Ensure the mix ratio is done as per the recommendation, else not the product performance may vary



STORAGE

Store in dry place away from the moisture



CUSTOMER CARE

Please mail to **support@fcsc.co.in** with your suggestion and complaints. For any other queries please contact **+91 3335000230**



TECHNICAL DATA

Name	:	FCSC SUPERGROUT EG
Physical appearance	:	Part A – Brown Viscous Fluid, Part B – White Viscous Fluid, Part C – Coloured Filler Powder
Pack Size	:	1 kg 5 kg

Application Data at 23±2°C & 60±5% RH

Mixing Ratio	:	1:2:9.5
Mix Density	:	1700 – 1720 kg/m ³
Joint Width	:	2-12mm
Pot life in Minutes	:	45 Minutes
Time to light traffic	:	24 hours
Time to heavy traffic	:	72 hours
Time of 100% Curing	:	7 Days

ANSI 118.3		
Test parameter	Standard Requirement	Product Performance
Water Cleanability	> 80 Min	80 – 120 Min
Initial Setting Time	> 120 Min	220 – 260 Min
Service Setting Time	≤ 7 Days	2 – 3 Days
Shrinkage @ 7 Days	< 0.25%	< 0.10%
Sag in Vertical Joints	No change in the shape of the joint	Pass
Bond strength to Quarry tile	> 1000 psi (6.87 MPa)	> 1180 psi (8.13 MPa)
Compressive Strength @ 7 Days	> 3500 psi (24.06 MPa)	7800 psi (53.77 MPa)
Tensile Adhesion Strength @ 7 Days	> 1000 psi (6.87 MPa)	2500 psi (17.23 MPa)
Thermal Shock	> 500 psi (3.44 MPa)	1150 psi (7.92 MPa)
ISO/EN		
Abrasion Resistance ISO 13007 – 4; EN 12808 – 2	≤ 250 mm ³	Pass
Flexural Strength under standard condition ISO 13007 – 4; EN 12808 – 3	≥ 30 MPa	35-40 MPa
Compressive Strength under standard condition 12ISO 13007 – 4; EN 12808 – 4	≥ 45 MPa	55-60 MPa
Shrinkage ISO 13007 – 4; EN 12808 – 4	< 1.5mm/m	0.6 – 0.8 mm/m
Water absorption @ 240 Min ISO 13007 – 4; EN 12808 – 5	≤ 0.1g	0.015-0.014 g



Scan the QR code to know more about our other products



Factory Address :

Ahmedabad-

Moraiya, Changodar, Bavla Highway, PS: Changodar, District- Ahmedabad, Gujarat, PIN- 382213.

Singur-

Shyam Business Park, Durgapur Express way, Dist - Singur, West Bengal, Pin - 712306

Office Address :

"SHRACHI TOWERS"

3rd Floor, 686, Anandpur, E. M. Bypass,

Kolkata - 700 107.

www.fcsc.co.in

Helpline no : 3335000230

Disclaimer

Information given in the data sheet is only a guideline for usage. Users are advised to undertake trial for product suitability prior to its full scale usage. There is no implied guaranty/warranty for the results and the company is not liable for any consequential damages.